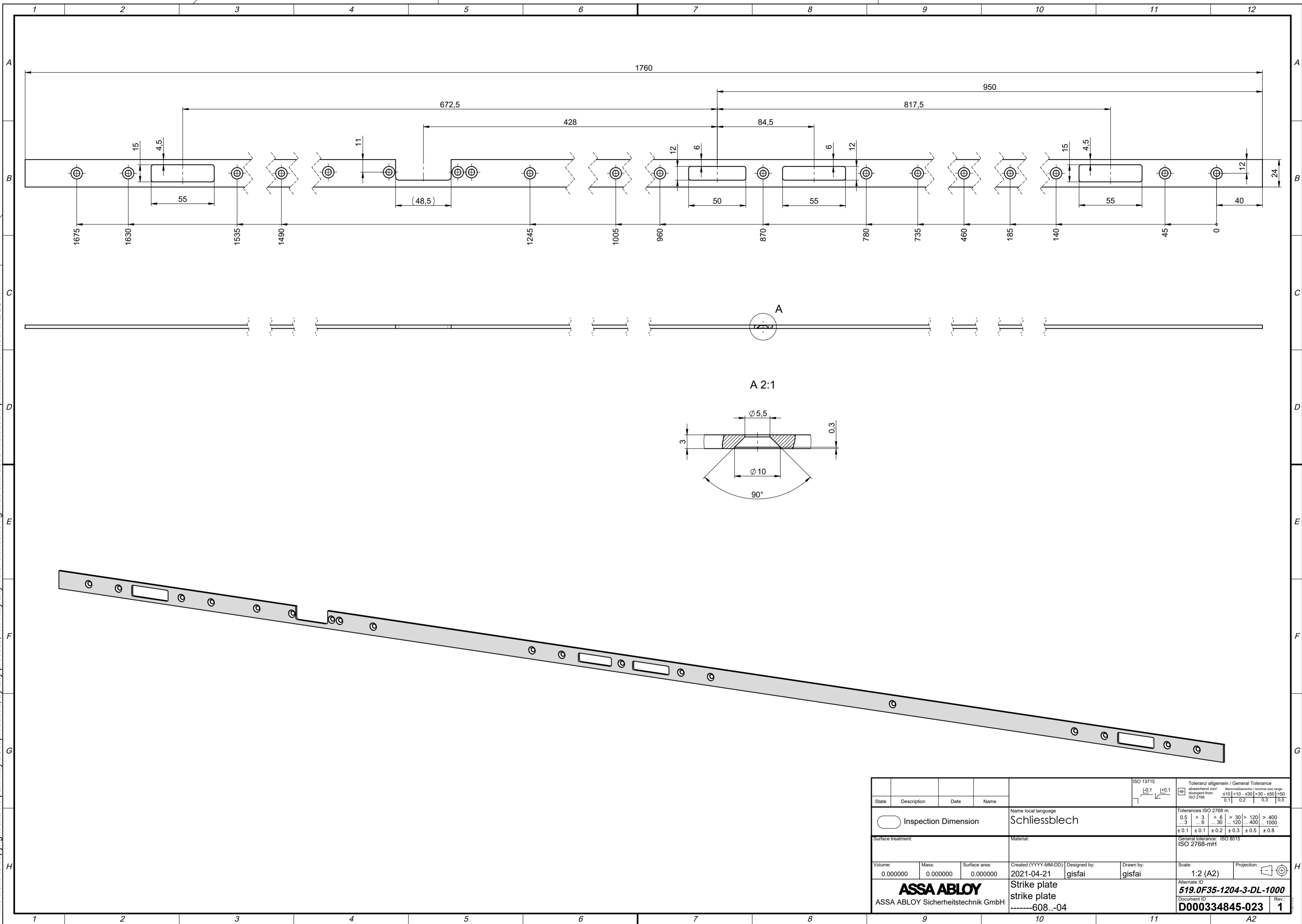


This work is copyright and no part may be reproduced, by any process, nor may any other exclusive right be exercised without the permission of ASSA ABLOY.



				ISO 13715		Toleranz allgemein / General Tolerance	
				$\begin{matrix} -0.1 & +0.1 \\ \swarrow & \searrow \end{matrix}$		abweichend von / divergent from ISO 2768 Nominalbereiche / nominal size range $\leq 10$   $>10 - \leq 30$   $>30 - \leq 50$   $>50$ $\pm 0.1$   $\pm 0.2$   $\pm 0.3$   $\pm 0.5$	
State		Description		Date		Name	
Inspection Dimension		Schliesseblech					
Surface treatment:				Material:			
Volume: 0.000000				Mass: 0.000000		Surface area: 0.000000	
Created (YYYY-MM-DD): 2021-04-21		Designed by: gisfai		Drawn by: gisfai		Scale: 1:2 (A2)	
<b>ASSA ABLOY</b> ASSA ABLOY Sicherheitstechnik GmbH				Strike plate strike plate -----608..-04		Tolerances ISO 2768 m $\begin{matrix} 0.5 & > 3 & > 6 & > 30 & > 120 & > 400 \\ \dots & \dots & \dots & \dots & \dots & \dots & \dots \\ \dots 3 & \dots 6 & \dots 30 & \dots 120 & \dots 400 & \dots 1000 \\ \pm 0.1 & \pm 0.1 & \pm 0.2 & \pm 0.3 & \pm 0.5 & \pm 0.8 \end{matrix}$ General tolerance: ISO 8015 ISO 2768-mH	
Alternate ID: 519.0F35-1204-3-DL-1000		Document ID: D000334845-023		Rev.: 1		Projection:	